

DC Motor

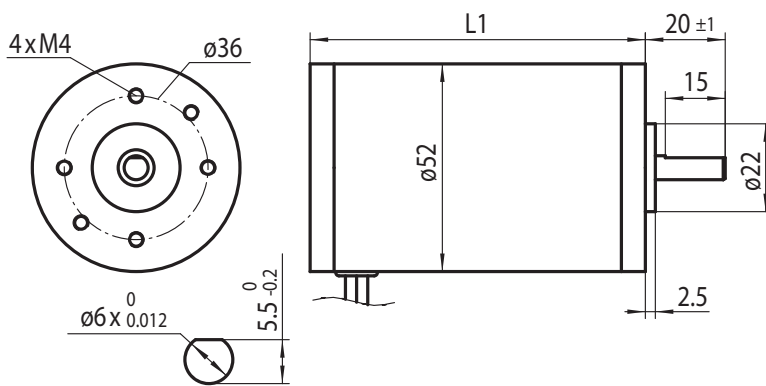
Type DC52



Technical Data

Model	DC52.90	DC52.105	DC52.120
Rated Voltage (V)	24	24	24
No Load Speed (min ⁻¹)	4000	4000	4000
Rated Torque (Ncm)	5	9	14
Rated Speed (min ⁻¹)	3400	3400	3400
Rated Current (A)	1.1	1.92	2.9
Stall Torque (Ncm)	33	61	93
Stall Current (A)	6.3	11.5	17.2
Rotor Inertia (Kgmm ²)	25	40	55
Back-EMF (V/min ⁻¹)	5.8	5.83	5.86
Torque Constant (Ncm/A)	5.54	5.57	5.6
Resistance (Ω)	3.8	2.1	1.4
Net Weight (g)	700	950	1200
Length L1 (mm)	90	105	120

Insulation Class B | Ambient Temp.: -10 to +40 °C

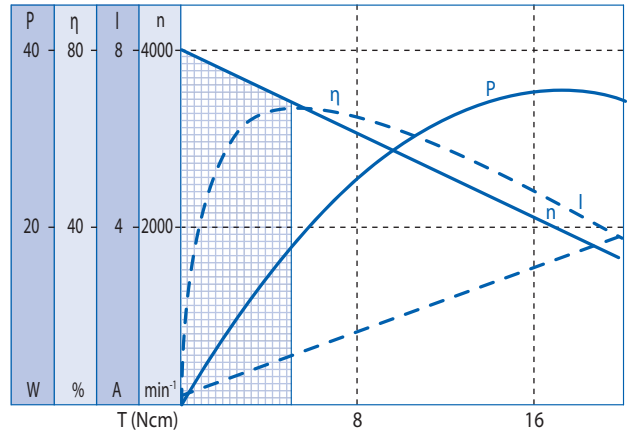


Options

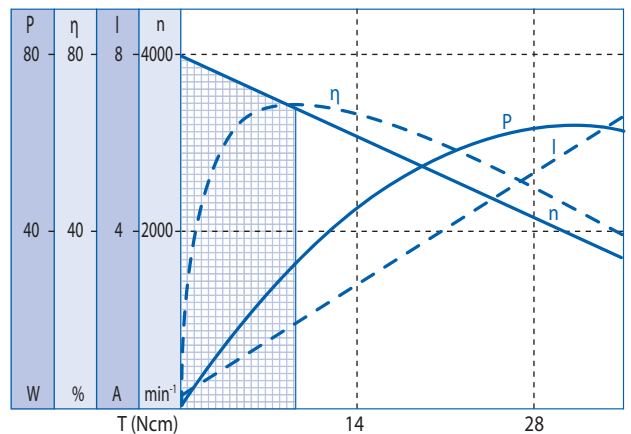
Encoder	Brake
Rear Shaft	Special Shaft
EMC Filter	Special Voltage
Cable	Insulation Class F/H
Connector	Increased Protection

Ball Bearing

DC52.90



DC52.105



DC52.120

